



LUI CHEUNG KWONG LUTHERAN KINDERGARTEN

Tuen Mun

Address : G/F, HIGH BLOCK, OI LIM HOUSE, YAU OI ESTATE,
TUEN MUN, NEW TERRITORIES

Joining
2023/24 KG Education Scheme

School No. 157074

Location No. 0001

Tel. : 2458 7438

Fax. : 2440 8658

School Information	
School Category	Non-profit-making
Student Category	Co-educational
Name of School Supervisor	MR LAM KAI HING
Name of School Principal	MS LAM YUET HO
School Founding Year	1982
Total No. of Permitted Accommodation of Classrooms in Use (Data as of Sept. 2022)	211
Number of Registered Classrooms	6
Outdoor Playground	No
Indoor Playground	Yes
Music Room	Yes
Other Special Room(s) / Area(s)	Fitness room, Sensory integration zone, Play room, Reading corner, Grace garden
Total No. of Principal & Teaching Staff (Data as of Sept. 2022) *	9
School Website	http://www.lckk.edu.hk/
Quality Review : Result and Report	Meeting the prescribed standards https://www.edb.gov.hk/attachment/tc/edu-system/primary-kindergarten/quality-assurance-frame-work/qr/qr-report/LuiCheungKwong_Lutheran.pdf

No. & Qualification of Principal & Teaching Staff (Data as of Sept. 2022) *	
Academic Qualification	
Degree holders	5
Non-degree holders	4
Professional Qualification	
C(ECE) or above	8
Qualified KG teachers	0
Other teacher trainings	0
Qualified assistant KG teachers	0
Others	1

* Excluding staff serving aged 0-2

Teacher to Pupil Ratio (Data as of Sept. 2022)	
Teacher to pupil ratio in morning session	1 : 12.1
Teacher to pupil ratio in afternoon session	1 : 5.9
Ratio includes classes aged 2-3	No

No. of Enrolment (Data as of Sept. 2022)				
	Nursery	Lower KG	Upper KG	Total
AM Session	22	20	30	72
PM Session	0	7	9	16
WD Session	11	13	13	37

Annual Fees (2023 / 24 School Year)				
		Nursery	Lower KG	Upper KG
Annual Fees After Deduction of Government Subsidy (No. of Instalment)	AM Session	Free	Free	Free
	PM Session	Free	Free	Free
	WD Session	\$9,900 (10)	\$9,900 (10)	\$9,900 (10)

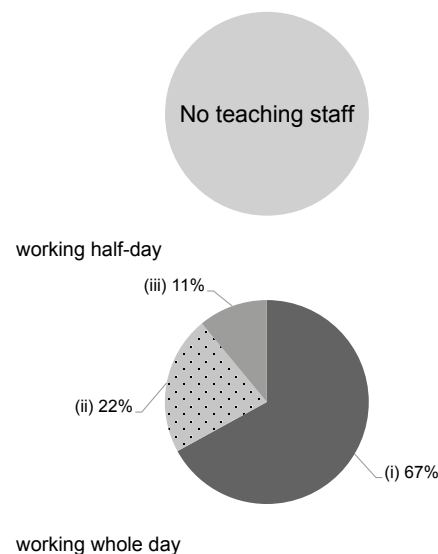
Please refer to the Fees Certificate for details of fees information.

Child Care Services (Data as of Sept. 2022)			
With child care services for children aged 2-3	-	With child care services for children aged under 2	-
Fee level (per annum)	(half - day)	No. of enrolment aged 2-3	0
	(full - day)	Joining Child Care Centre Subsidy Scheme	-
Providing occasional child care services	-	Providing extended hours services	-

Curriculum Details	
Curriculum type : Local	
Curriculum planning	
<p>The concept of 'Happy Learning, Learning to Achieve' allows children to Learn by playing and exploring and it fosters students' all-round and balanced development with the nine generic skills. Children's self esteem will be strengthened and they will be motivated to think in the learning environment. Our curriculum is spiral-based and includes holistic innovative education elements. We aim at improving children's communication skills and collaboration skills. It is expected that children can use Chinese and English to discuss in complete sentences.</p> <p>We will follow the "Kindergarten Education Curriculum Guide" (2017) to plan curriculum. Children of nursery classes will not be asked to write, and there will not be mechanical copying exercises and drills on calculation.</p>	
Learning / Teaching approach & activities	
<p>Through drama teaching, free play and 'Be the Change', students can experience and explore things that they are related to and interested in. Activities include personal activities, discussions in pairs and group learning. Multi-sensory activities include Little Explorers / Cooking Classes, Visual Art Classes, Dance Classes, EQ Games and Bibi & Friends. The kindergarten cares for all and will arrange children to learn outside and participate in community activities. All these help children to care about their families, teachers, classmates and things around them. They also help children understand the needs of others and be more willing to help people, spreading love and care in the school as well as the community.</p>	
Assessment of children's learning experiences	
<p>In terms of learning assessment, in order to understand students' learning progresses, we adopt a continuous assessment method to allow parents to understand the development of their children in different aspects.</p>	

Monthly salary range of principal & teaching staff
(Data as of Mar. 2023)

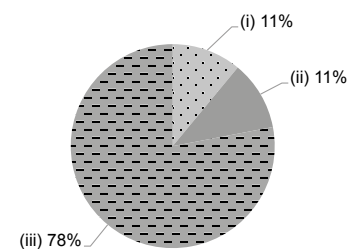
- (i) ≤ \$30,000
- (ii) \$30,001 - \$40,000
- (iii) > \$40,000



School Characteristics	
School vision and mission	
<p>In line with the spirit of Christ, we aim to provide children with a perfect pre-school education of which they are inspired to develop healthily in body and mind, build a noble character, and adapt to social life.</p>	
Support to students	
<p>The New Student Adaption Period and Parent-Child Classes are designed to help the children newly admitted to school adapt to the kindergarten life more easily, and our social worker is to promote children's healthy physical and mental development. The school also organizes vaccination services for children and different kinds of check-up. To help children develop a healthy lifestyle, we have been participating in the Spine Protection Campaign. To cater for learning needs of students, we have planned various activities and visitations.</p>	
Support to non-Chinese speaking (NCS) students	
<p>Received Grant for Support to NCS Students; appoint additional teaching staff / teaching assistants to support NCS students learning Chinese; arrange interpretation / translation services; engage NCS parent volunteers to enhance communication between school and parents; create an enriched language environment for mastery of the Chinese language; create an inclusive learning environment to facilitate students' integration; facilitate professional development for teachers to develop effective strategies to help NCS students learn Chinese.</p>	
Support to students with special needs	
<p>Joining the On-site Pre-school Rehabilitation Services.</p>	
Link with parents	
<p>Parent-teacher association : Yes</p>	
Other activities / communication with parents	
<p>Parental Education Seminars, Parent-Child School Picnics, Parents' Meetings, Conferences, Induction programmes, Parent-Child Game Day, and other activities to enhance parent-school cooperation are organized.</p>	

Working experience of principal & teaching staff in pre-primary education
(Data as of Mar. 2023)

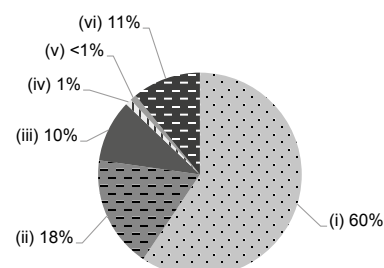
- (i) < 4 years
- (ii) 4 - 7 years
- (iii) > 7 years



2021/22 School Expenditure Information

Expenditure information based on audited account Yes

- (i) salary of principal & teaching staff
- (ii) non-teaching staff salary
- (iii) rent, management fees, rates & government rent
- (iv) teaching resources
- (v) staff training & professional development
- (vi) other expenses



Price of Major School Items (2022 / 23 School Year)

Summer uniform	\$550-558 / set	Winter uniform	\$667 / set
School bag	\$115 / each	Tea and snacks	\$840 / year
Textbooks	\$374-851 / year	Exercise books/workbooks	\$626-839 / year
Stationery	No such item	Bedding items	\$1,040 / set