



HONG KONG TAOIST ASSOCIATION YUEN YUEN KINDERGARTEN

Tsuen Wan

Address : G/F, UNITS 33-40 & 41-54, SHEK TO HOUSE, SHEK WAI
KOK ESTATE, TSUEN WAN, NEW TERRITORIES

Joining
2023/24 KG Education Scheme

School No. 157066

Location No. 0001

Tel. : 2498 4636

Fax. : 2702 0789

School Information	
School Category	Non-profit-making
Student Category	Co-educational
Name of School Supervisor	MR TANG KAM HUNG
Name of School Principal	MS CHIU MEI KAY
School Founding Year	1982
Total No. of Permitted Accommodation of Classrooms in Use (Data as of Sept. 2022)	179
Number of Registered Classrooms	12
Outdoor Playground	No
Indoor Playground	Yes
Music Room	Yes
Other Special Room(s) / Area(s)	Library Area, Activity room, PE and play area
Total No. of Principal & Teaching Staff (Data as of Sept. 2022) *	18
School Website	https://www.yuenyuenkg.edu.hk/shekwaikok/
Quality Review : Result and Report	Meeting the prescribed standards https://www.edb.gov.hk/attachment/en/edu-system/preprimary-kindergarten/quality-assurance-frame-work/qr/qr-report/HKTA_YuenYuen.pdf

No. & Qualification of Principal & Teaching Staff (Data as of Sept. 2022) *	
Academic Qualification	
Degree holders	13
Non-degree holders	5
Professional Qualification	
C(ECE) or above	17
Qualified KG teachers	1
Other teacher trainings	0
Qualified assistant KG teachers	0
Others	0

* Excluding staff serving aged 0-2

Teacher to Pupil Ratio (Data as of Sept. 2022)	
Teacher to pupil ratio in morning session	1 : 10.1
Teacher to pupil ratio in afternoon session	1 : 8.8
Ratio includes classes aged 2-3	Yes

No. of Enrolment (Data as of Sept. 2022)				
	Nursery	Lower KG	Upper KG	Total
AM Session	10	10	11	31
PM Session	0	0	0	0
WD Session	39	49	53	141

Annual Fees (2023 / 24 School Year)				
		Nursery	Lower KG	Upper KG
Annual Fees After Deduction of Government Subsidy (No. of Instalment)	AM Session	Free	Free	Free
	PM Session	Free	Free	Free
	WD Session	\$11,880 (11)	\$11,880 (11)	\$11,880 (11)

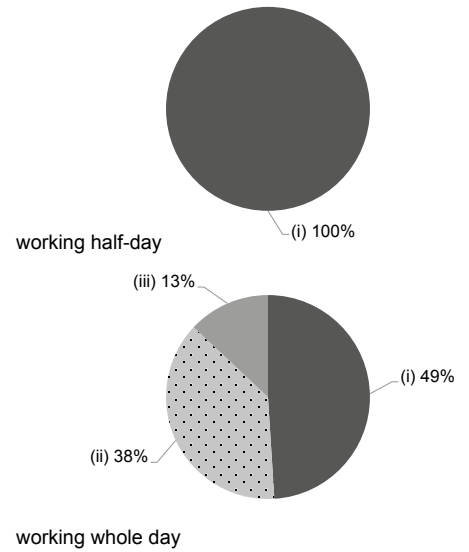
Please refer to the Fees Certificate for details of fees information.

Child Care Services (Data as of Sept. 2022)			
With child care services for children aged 2-3	Yes	With child care services for children aged under 2	No
Fee level (per annum)	\$35,200 (half - day)	No. of enrolment aged 2-3	10
	- (full - day)	Joining Child Care Centre Subsidy Scheme	No
Providing occasional child care services	No	Providing extended hours services	No

Curriculum Details	
Curriculum type : Local	
Curriculum planning	
<p>Curriculum designed to cater for children's physical and mental development. We promote language development to enhance children's biliteracy and trilingualism, preschool mathematics, and an online learning platform to inspire logical thinking and key concepts. We nurture children's sprite for exploration. We have a moral and emotional education program to enhance social development; physical fitness and aesthetic education to boost motor ability and nurture creativity.</p> <p>We will follow the "Kindergarten Education Curriculum Guide" (2017) to plan curriculum. Children of nursery classes will not be asked to write, and there will not be mechanical copying exercises and drills on calculation.</p>	
Learning / Teaching approach & activities	
<p>We adopt real-life learning themes, using integrated approach to design activities, and using learning through play as our strategy, so that children will be able to learn through diversify mode, such as: Chinese-English creative story drama, physical activities, exploring nature and science activities. Also, we cooperates with family and community to provide visits, community service, uniform group and other activities for them to learn through experience.</p>	
Assessment of children's learning experiences	
<p>We use diversified assessment models and data collection, such as continuous observation record, assessment form, work analysis. These are used to record children's performance and development in various areas. Assessments are done by teachers and parents, along with children's feedback which are critical for comprehensive and systematic analysis for their overall development, and use it to feedback to teaching.</p>	

Monthly salary range of principal & teaching staff (Data as of Mar. 2023)

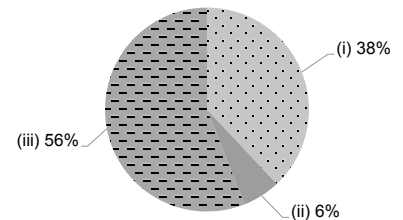
- (i) ≤ \$30,000
- (ii) \$30,001 - \$40,000
- (iii) > \$40,000



School Characteristics	
School vision and mission	
<p>Our mission is to provide a holistic education based on Taoism, placing equal emphasis on students' moral, intellectual, physical, social and aesthetic development. In accordance with our motto "Grasp Principles, Cultivate Virtues", we are dedicated to helping students develop moral integrity and academic excellence.</p>	
Support to students	
<p>Our school social worker providing professional support and counselling service to children and their families by individual or in a group. We organize activities for children and parents and form small groups for educational, developmental and therapeutic purposes, aim to improve parenting skills and help young children for their all round development.</p>	
Support to non-Chinese speaking (NCS) students	
<p>Received Grant for Support to NCS Students; appoint additional teaching staff / teaching assistants to support NCS students learning Chinese; arrange interpretation / translation services; engage NCS parent volunteers to enhance communication between school and parents; create an enriched language environment for mastery of the Chinese language; create an inclusive learning environment to facilitate students' integration; collaborate with non-governmental organisations (NGOs) to create an inclusive learning environment; facilitate professional development for teachers to develop effective strategies to help NCS students learn Chinese; C-for-Chinese@JC; Parent Academy</p>	
Support to students with special needs	
<p>Joining the On-site Pre-school Rehabilitation Services.</p>	
Link with parents	
<p>Parent-teacher association : Yes</p>	
Other activities / communication with parents	
<p>We hosts parent talks on different topics, let parents gain a better understanding of their children's learning and needs, strengthen home-school cooperation and establish good partnerships.</p>	

Working experience of principal & teaching staff in pre-primary education (Data as of Mar. 2023)

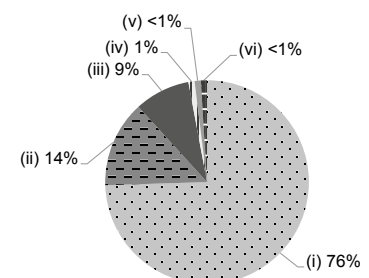
- (i) < 4 years
- (ii) 4 - 7 years
- (iii) > 7 years



2021/22 School Expenditure Information

Expenditure information based on audited account Yes

- (i) salary of principal & teaching staff
- (ii) non-teaching staff salary
- (iii) rent, management fees, rates & government rent
- (iv) teaching resources
- (v) staff training & professional development
- (vi) other expenses



Price of Major School Items (2022 / 23 School Year)

Summer uniform	\$294-405 / set	Winter uniform	\$552-577 / set
School bag	\$128 / each	Tea and snacks	\$500 / year
Textbooks	\$602-1,223 / year	Exercise books/ workbooks	\$184-382 / year
Stationery	\$0 / year	Bedding items	\$1,100 / set