



# REGINA COELI ANGLO-CHINESE KINDERGARTEN (SECOND BRANCH)

Tuen Mun

Address : UNIT 11-16, G/F, MOON YU HOUSE, SAM SHING ESTATE,  
TUEN MUN, NEW TERRITORIES

Joining  
2023/24 KG Education Scheme

School No. 156728

Location No. 0001

Tel. : 2458 0796

Fax. : 2458 0796

School Information	
School Category	Non-profit-making
Student Category	Co-educational
Name of School Supervisor	MS TAM SIU HING
Name of School Principal	MS WONG PO CHU
School Founding Year	1980
Total No. of Permitted Accommodation of Classrooms in Use (Data as of Sept. 2022)	114
Number of Registered Classrooms	8
Outdoor Playground	Yes
Indoor Playground	Yes
Music Room	Yes
Other Special Room(s) / Area(s)	Library
Total No. of Principal & Teaching Staff (Data as of Sept. 2022) *	8
School Website	<a href="http://www.rck.edu.hk">http://www.rck.edu.hk</a>
Quality Review : Result and Report	Meeting the prescribed standards <a href="https://www.edb.gov.hk/attachment/tc/edu-system/preprimary-kindergarten/quality-assurance-frame-work/qv/qv-report/ReginaCoeli_AC_2ndBr.pdf">https://www.edb.gov.hk/attachment/tc/edu-system/preprimary-kindergarten/quality-assurance-frame-work/qv/qv-report/ReginaCoeli_AC_2ndBr.pdf</a>

No. & Qualification of Principal & Teaching Staff (Data as of Sept. 2022) *	
Academic Qualification	
Degree holders	3
Non-degree holders	5
Professional Qualification	
C(ECE) or above	8
Qualified KG teachers	0
Other teacher trainings	0
Qualified assistant KG teachers	0
Others	0

\* Excluding staff serving aged 0-2

Teacher to Pupil Ratio (Data as of Sept. 2022)	
Teacher to pupil ratio in morning session	1 : 8.8
Teacher to pupil ratio in afternoon session	1 : 6.1
Ratio includes classes aged 2-3	No

No. of Enrolment (Data as of Sept. 2022)				
	Nursery	Lower KG	Upper KG	Total
AM Session	7	5	9	21
PM Session	0	0	0	0
WD Session	15	16	18	49

Annual Fees (2023 / 24 School Year)				
		Nursery	Lower KG	Upper KG
Annual Fees After Deduction of Government Subsidy (No. of Instalment)	AM Session	Free	Free	Free
	PM Session	Free	Free	Free
	WD Session	\$4,367 (11)	\$4,367 (11)	\$4,367 (11)

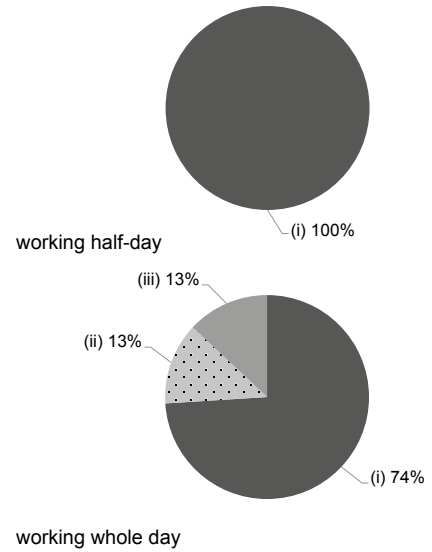
Please refer to the Fees Certificate for details of fees information.

Child Care Services (Data as of Sept. 2022)			
With child care services for children aged 2-3	-	With child care services for children aged under 2	-
Fee level (per annum)	(half - day)	No. of enrolment aged 2-3	0
	(full - day)	Joining Child Care Centre Subsidy Scheme	-
Providing occasional child care services	-	Providing extended hours services	-

Curriculum Details	
Curriculum type : Local	
Curriculum planning	
<p>According to the "Guide to the Pre-primary Curriculum", we have devised a curriculum that caters to children's experiences, abilities and interests and focuses on developing individual thinking and creativity and enhancing their self-care, cognitive, and problem solving skills.</p> <p>We will follow the "Kindergarten Education Curriculum Guide" (2017) to plan curriculum. Children of nursery classes will not be asked to write, and there will not be mechanical copying exercises and drills on calculation.</p>	
Learning / Teaching approach & activities	
<p>High Scope Curriculum; Project-based Learning; Life-wide Learning and Group Learning; Discussion; Exploration; Self-examination; Experiments; Visits; Data Collection; Reading Program; Bi-literacy and Tri-lingualism (Chinese, English and Mandarin); Multimedia Interactive Learning; Scout Group; a variety of Extracurricular Activities.</p>	
Assessment of children's learning experiences	
<p>Observation records, continuous assessment of physical and mental developments, and learning assessment and subject learning assessment.</p>	

Monthly salary range of principal & teaching staff (Data as of Mar. 2023)

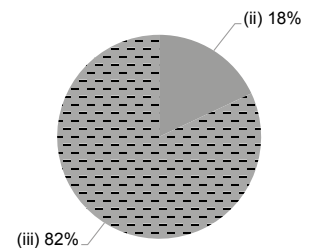
- (i) ≤ \$30,000
- (ii) \$30,001 - \$40,000
- (iii) > \$40,000



School Characteristics	
School vision and mission	
<p>We want our children to learn happily and develop their full potentials. In the spirit of the Catholic love for humanity, we are committed to providing a great learning environment and diverse learning opportunities to inspire children's interest in learning, exploit their individual potentials and empower them to attain balanced, all-round development in moral, intellectual, physical, social, aesthetic and spiritual areas.</p>	
Support to students	
<p>Adaptive Weeks for new students, P.1 Adaption activities jointly organized with primary schools, Worn School Uniform Donation Program (families with economic difficulties).</p>	
Support to non-Chinese speaking (NCS) students	
<p>Received Grant for Support to NCS Students; appoint additional teaching staff / teaching assistants to support NCS students learning Chinese; arrange interpretation / translation services; engage NCS parent volunteers to enhance communication between school and parents; create an enriched language environment for mastery of the Chinese language; create an inclusive learning environment to facilitate students' integration; collaborate with non-governmental organisations (NGOs) to create an inclusive learning environment; facilitate professional development for teachers to develop effective strategies to help NCS students learn Chinese; participate in school-based professional support programmes organised by EDB.</p>	
Support to students with special needs	
<p>Joining the On-site Pre-school Rehabilitation Services.</p>	
Link with parents	
<p>Parent-teacher association : Yes</p>	
Other activities / communication with parents	
<p>Parents' Day, Parent-Child Birthday Parties, Seminars, Volunteer Team, Parent-Child School Picnics, Competition Day, Competitions, Festive Activities; Contact: Phone Calls, School-Parent Contact Handbooks, etc.</p>	

Working experience of principal & teaching staff in pre-primary education (Data as of Mar. 2023)

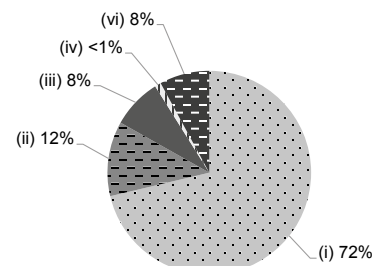
- (i) < 4 years
- (ii) 4 - 7 years
- (iii) > 7 years



2021/22 School Expenditure Information

Expenditure information based on audited account Yes

- (i) salary of principal & teaching staff
- (ii) non-teaching staff salary
- (iii) rent, management fees, rates & government rent
- (iv) teaching resources
- (v) staff training & professional development
- (vi) other expenses



Price of Major School Items (2022 / 23 School Year)			
Summer uniform	\$321 / set	Winter uniform	\$763 / set
School bag	\$116 / each	Tea and snacks	\$1,120 / year
Textbooks	\$2,602 / year	Exercise books/ workbooks	\$327 / year
Stationery	\$729 / year	Bedding items	\$1,160 / set