



REGINA COELI ANGLO-CHINESE KINDERGARTEN

Tuen Mun

Address : G/F & 1/F, HING SHING HOUSE, TAI HING ESTATE,
TUEN MUN, NEW TERRITORIES

Joining
2023/24 KG Education Scheme

School No. 156515

Location No. 0001

Tel. : 2462 2949

Fax. : 3764 0113

School Information	
School Category	Non-profit-making
Student Category	Co-educational
Name of School Supervisor	MS TAM SIU HING
Name of School Principal	MS CHUNG HAN YING CINDY
School Founding Year	1978
Total No. of Permitted Accommodation of Classrooms in Use (Data as of Sept. 2022)	93
Number of Registered Classrooms	23
Outdoor Playground	Yes
Indoor Playground	Yes
Music Room	Yes
Other Special Room(s) / Area(s)	reading room, dancing room, english room, non-Chinese speaking room
Total No. of Principal & Teaching Staff (Data as of Sept. 2022) *	11
School Website	http://www.rck.edu.hk
Quality Review : Result and Report	Meeting the prescribed standards https://www.edb.gov.hk/attachment/tc/edu-system/primary-kindergarten/quality-assurance-frame-work/qr/qr-report/ReginaCoeli.pdf

No. & Qualification of Principal & Teaching Staff (Data as of Sept. 2022) *	
Academic Qualification	
Degree holders	4
Non-degree holders	7
Professional Qualification	
C(ECE) or above	11
Qualified KG teachers	0
Other teacher trainings	0
Qualified assistant KG teachers	0
Others	0

* Excluding staff serving aged 0-2

Teacher to Pupil Ratio (Data as of Sept. 2022)	
Teacher to pupil ratio in morning session	1 : 6.8
Teacher to pupil ratio in afternoon session	1 : 6.6
Ratio includes classes aged 2-3	No

No. of Enrolment (Data as of Sept. 2022)				
	Nursery	Lower KG	Upper KG	Total
AM Session	0	5	4	9
PM Session	0	0	0	0
WD Session	16	22	28	66

Annual Fees (2023 / 24 School Year)				
		Nursery	Lower KG	Upper KG
Annual Fees After Deduction of Government Subsidy (No. of Instalment)	AM Session	Free	Free	Free
	PM Session	Free	Free	Free
	WD Session	\$3,553 (11)	\$3,553 (11)	\$3,553 (11)

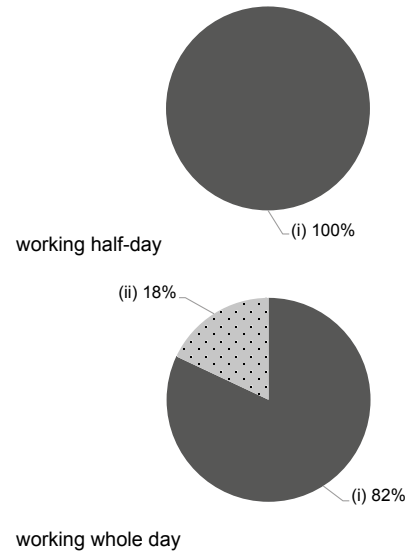
Please refer to the Fees Certificate for details of fees information.

Child Care Services (Data as of Sept. 2022)			
With child care services for children aged 2-3	-	With child care services for children aged under 2	-
Fee level (per annum)	(half - day)	No. of enrolment aged 2-3	0
	(full - day)	Joining Child Care Centre Subsidy Scheme	-
Providing occasional child care services	-	Providing extended hours services	-

Curriculum Details	
Curriculum type : Local	
Curriculum planning	
<p>According to the "Kindergarten Education Curriculum Guide" (2017), we have devised a curriculum that caters to children's experiences, abilities and interests and focuses on the development of individual thinking and creativity. Also, we provide a diversity of intelligence extracurricular activities to enhance children's self-care, moral, cognitive, and problem solving skills.</p> <p>We will follow the "Kindergarten Education Curriculum Guide" (2017) to plan curriculum. Children of nursery classes will not be asked to write, and there will not be mechanical copying exercises and drills on calculation.</p>	
Learning / Teaching approach & activities	
<p>Our teaching method is to let our students be biliterate and trilingual (i.e. Chinese / English and Cantonese, English and Putonghua) in our theme curriculums, where effective learning is characterized by drama, music, exploring, experiments, visiting, data research, multimedia learning as well as site reconnaissance like Brighter Smiles Playland, Hong Kong Wetland Park and Hong Kong Science Museum etc. We also emphasize in providing our students with the opportunities to inspire their live and develop their creativity, teamwork and critical thinking through participating in our school activities like shared reading, uniformed groups (H. K. Grasshopper Scouts, Happy Bee Hive, H.K. Road Safety Patrol), Green Organic Farm and Environmental Planting Scheme etc.</p>	
Assessment of children's learning experiences	
<p>Observation records, continuous assessment of physical and mental developments, subject learning assessment, portfolios and project learning assessment.</p>	

Monthly salary range of principal & teaching staff
(Data as of Mar. 2023)

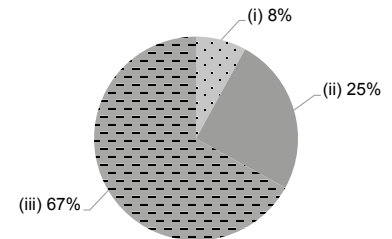
- (i) ≤ \$30,000
- (ii) \$30,001 - \$40,000
- (iii) > \$40,000



School Characteristics	
School vision and mission	
<p>We want our children to learn happily and develop their full potentials. In the spirit of the Catholic love for humanity, we are committed to providing a great learning environment and diverse learning opportunities to inspire children's interest in learning, exploit their individual potentials and empower them to attain balanced, all-round development in moral, intellectual, physical, social, aesthetic and spiritual areas.</p>	
Support to students	
<p>Adaptive Weeks for new students, Parent Orientation, Parents' Meetings for P.1 Admission, K.2 Parents' Day, Parents Seminars, and P.1 Adaption activities jointly organized with primary schools, (Campus Filled With Love) school social work services, etc.</p>	
Support to non-Chinese speaking (NCS) students	
<p>Received Grant for Support to NCS Students; appoint additional teaching staff / teaching assistants to support NCS students learning Chinese; arrange interpretation / translation services; create an enriched language environment for mastery of the Chinese language; collaborate with non-governmental organisations (NGOs) to create an inclusive learning environment; participate in school-based professional support programmes organised by EDB.</p>	
Support to students with special needs	
<p>Joining the On-site Pre-school Rehabilitation Services.</p>	
Link with parents	
<p>Parent-teacher association : Yes</p>	
Other activities / communication with parents	
<p>Parents' Day, Birthday Parties, Seminars, Parent Volunteer Team, Parent-Child School Picnics, Parent-Child Sports Days, Parent-School Association, Parent-Child Competitions, Four Seasonal Festive Activities, etc. Contact: Announcements, Phone Calls, School-Parent Contact Handbooks, School Website, Emails, Workshops, Interviews, Home Visits, and Letters.</p>	

Working experience of principal & teaching staff in pre-primary education
(Data as of Mar. 2023)

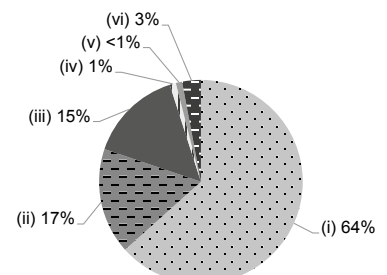
- (i) < 4 years
- (ii) 4 - 7 years
- (iii) > 7 years



2021/22 School Expenditure Information

Expenditure information based on audited account Being Audited

- (i) salary of principal & teaching staff
- (ii) non-teaching staff salary
- (iii) rent, management fees, rates & government rent
- (iv) teaching resources
- (v) staff training & professional development
- (vi) other expenses



Price of Major School Items (2022 / 23 School Year)			
Summer uniform	\$321 / set	Winter uniform	\$763 / set
School bag	\$116 / each	Tea and snacks	\$1,120 / year
Textbooks	\$2,602 / year	Exercise books/ workbooks	\$327 / year
Stationery	\$729 / year	Bedding items	\$1,160 / set