



KAM TSIN VILLAGE HO TUNG KINDERGARTEN

North

Address : DD 92, KAM TSIN, SHEUNG SHUI, NEW TERRITORIES

Joining
2023/24 KG Education Scheme

School No. 156191

Location No. 0001

Tel. : 2670 8802

Fax. : 2670 6739

School Information	
School Category	Non-profit-making
Student Category	Co-educational
Name of School Supervisor	MR HAU TIM KAU
Name of School Principal	MS WONG NGA LAI
School Founding Year	1976
Total No. of Permitted Accommodation of Classrooms in Use (Data as of Sept. 2022)	103
Number of Registered Classrooms	4
Outdoor Playground	Yes
Indoor Playground	No
Music Room	No
Other Special Room(s) / Area(s)	Outdoor Playground, LEGO Wall
Total No. of Principal & Teaching Staff (Data as of Sept. 2022) *	8
School Website	http://www.ktvhtkg.edu.hk
Quality Review : Result and Report	Meeting the prescribed standards https://www.edb.gov.hk/attachment/tc/edu-system/preprimary-kindergarten/quality-assurance-frame-work/qr/qr-report/KTV_HoTung.pdf

No. & Qualification of Principal & Teaching Staff (Data as of Sept. 2022) *	
Academic Qualification	
Degree holders	6
Non-degree holders	2
Professional Qualification	
C(ECE) or above	8
Qualified KG teachers	0
Other teacher trainings	0
Qualified assistant KG teachers	0
Others	0

* Excluding staff serving aged 0-2

Teacher to Pupil Ratio (Data as of Sept. 2022)	
Teacher to pupil ratio in morning session	1 : 9.3
Teacher to pupil ratio in afternoon session	1 : 8.7
Ratio includes classes aged 2-3	No

No. of Enrolment (Data as of Sept. 2022)				
	Nursery	Lower KG	Upper KG	Total
AM Session	4	2	7	13
PM Session	0	0	0	0
WD Session	16	17	28	61

Annual Fees (2023 / 24 School Year)				
		Nursery	Lower KG	Upper KG
Annual Fees After Deduction of Government Subsidy (No. of Instalment)	AM Session	Free	Free	Free
	PM Session	-	-	-
	WD Session	\$7,730 (10)	\$7,730 (10)	\$7,730 (10)

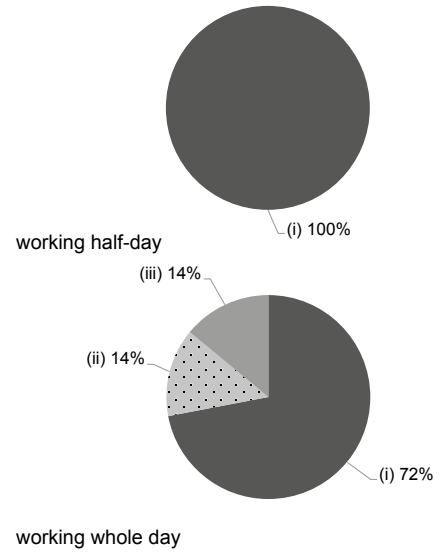
Please refer to the Fees Certificate for details of fees information.

Child Care Services (Data as of Sept. 2022)			
With child care services for children aged 2-3	-	With child care services for children aged under 2	-
Fee level (per annum)	(half - day)	No. of enrolment aged 2-3	0
	(full - day)	Joining Child Care Centre Subsidy Scheme	-
Providing occasional child care services	-	Providing extended hours services	-

Curriculum Details	
Curriculum type : Local	
Curriculum planning	
<p>"H•A•P•P•Y" Learning is our core education value: H - (Healthy) A - (Academic) P - (Polite) P - (Proactive) Y - (Young) With a firm focus on "innocence" and "exploration," our curriculum allows children to cultivate positive virtues and establish the spirit of caring, sharing, accepting, and appreciating. It also helps children foster a positive scholastic attitude and promotes life-long learning. Furthermore, our curriculum develops the courage to create and innovate, and the bravery to accept challenges and succeed through happy learning.</p> <p>We will follow the "Kindergarten Education Curriculum Guide" (2017) to plan curriculum. Children of nursery classes will not be asked to write, and there will not be mechanical copying exercises and drills on calculation.</p>	
Learning / Teaching approach & activities	
<p>1. Thematic Approach: The school puts a strong emphasis on personal experience, active exploration, and accumulation of life experience of our students. 2. Project-based Learning: Our teachers implement the curriculum according to children's life experiences, interests, and abilities. We are a child-centred kindergarten. 3. Teaching with Picture Books: Teaching with picture books is an approach consisting of three different stages, namely, "reading," "discussion," and "extended learning activities." 4. English Lesson: To create a positive English-speaking and learning environment and improve the English language proficiency of children; foreign teachers are part of our dedicated staff and are employed at school to provide specialised teaching. 5. Mandarin (Putonghua) Lesson: Our Mandarin lessons are taught by specialist teachers who are responsible for enhancing children's learning interest and improving oral and pinyin skills through interesting learning activities. 6. Childhood Activity Day: Special activities on Mondays, completed in small groups, to develop children's interests and potential. These activities included: Woodworking Group, Outdoor Activity Group, Art Group, Football Group, Harmonious Pastel Group, Chorus, Food Group...etc.</p>	
Assessment of children's learning experiences	
<p>Through daily observation, record keeping, analysis and continuous assessment, we create a "learning portfolio" for children. Through children's performance and clear feedback, we monitor the scope of their development, understanding and learning as well as their values and attitudes. These help the school and parents to provide appropriate counseling and support.</p>	

Monthly salary range of principal & teaching staff (Data as of Mar. 2023)

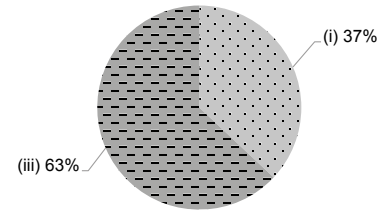
- (i) ≤ \$30,000
- (ii) \$30,001 - \$40,000
- (iii) > \$40,000



School Characteristics	
School vision and mission	
<p>1. We are devoted to providing child-based and truth-seeking education. 2. We address comprehensive education and see students as its basis. We follow a whole child approach to education. 3. Students are encouraged to learn independently and unleash their potentials in an enjoyable, creative and supportive learning environment. 4. We focus on developing positive attitudes and values, nurturing our students into upstanding citizens with academic achievements who will serve the society.</p>	
Support to students	
<p>1. School bus service and cross-border shuttle. 2. Students Orientation Week. 3. Primary School Visit. 4. On-site, dedicated social work service. 5. Joining the On-site Pre-school Rehabilitation Services.</p>	
Support to non-Chinese speaking (NCS) students	
<p>Received Grant for Support to NCS Students; arrange interpretation / translation services; engage NCS parent volunteers to enhance communication between school and parents; create an enriched language environment for mastery of the Chinese language; create an inclusive learning environment to facilitate students' integration; facilitate professional development for teachers to develop effective strategies to help NCS students learn Chinese; 1. Admission Support 2. Teaching Support 3. School Social Worker Support</p>	
Support to students with special needs	
<p>Joining the On-site Pre-school Rehabilitation Services.</p>	
Link with parents	
<p>Parent-teacher association : Yes</p>	
Other activities / communication with parents	
<p>1. Organising thematic seminars and parent-child activities 2. Parent Day 3. Sending messages and making emergency contact via electronic platforms. 4. Making appointments or phone consultations to foster communication opportunities. 5. Creating parent volunteer groups to allow parents to engage and assist in school affairs.</p>	

Working experience of principal & teaching staff in pre-primary education (Data as of Mar. 2023)

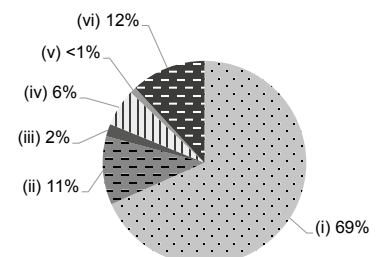
- (i) < 4 years
- (ii) 4 - 7 years
- (iii) > 7 years



2021/22 School Expenditure Information

Expenditure information based on audited account Yes

- (i) salary of principal & teaching staff
- (ii) non-teaching staff salary
- (iii) rent, management fees, rates & government rent
- (iv) teaching resources
- (v) staff training & professional development
- (vi) other expenses



Price of Major School Items (2022 / 23 School Year)			
Summer uniform	\$325 / set	Winter uniform	\$545 / set
School bag	\$82 / each	Tea and snacks	\$1,100 / year
Textbooks	\$400-500 / year	Exercise books/workbooks	\$760-850 / year
Stationery	\$275-310 / year	Bedding items	No such item