



LICK HANG KINDERGARTEN

Islands

Address : G/F, FLAT C & D, 72-74 RURAL COMMITTEE ROAD,
MUI WO, NEW TERRITORIES

Tel. : 2984 2300

Fax. : 2984 8735

Joining
2023/24 KG Education Scheme

School No. 155705

Location No. 0002

| School Information | |
|---|---|
| School Category | Non-profit-making |
| Student Category | Co-educational |
| Name of School Supervisor | MS LAM SIU WAH |
| Name of School Principal | MS LAM SIU WAH |
| School Founding Year | 1964 |
| Total No. of Permitted Accommodation of Classrooms in Use (Data as of Sept. 2022) | 30 |
| Number of Registered Classrooms | 2 |
| Outdoor Playground | Yes |
| Indoor Playground | Yes |
| Music Room | Yes |
| Other Special Room(s) / Area(s) | No information |
| Total No. of Principal & Teaching Staff (Data as of Sept. 2022) * | 3 |
| School Website | http://www.lickhang.edu.hk |
| Quality Review : Result and Report | Meeting the prescribed standards https://www.edb.gov.hk/attachment/tc/edu-system/preprimary-kindergarten/quality-assurance-frame-work/qr/qr-report/LickHang.pdf |

| No. & Qualification of Principal & Teaching Staff (Data as of Sept. 2022) * | |
|---|---|
| Academic Qualification | |
| Degree holders | 3 |
| Non-degree holders | 0 |
| Professional Qualification | |
| C(ECE) or above | 3 |
| Qualified KG teachers | 0 |
| Other teacher trainings | 0 |
| Qualified assistant KG teachers | 0 |
| Others | 0 |

* Excluding staff serving aged 0-2

| Teacher to Pupil Ratio (Data as of Sept. 2022) | |
|--|---------|
| Teacher to pupil ratio in morning session | 1 : 5.0 |
| Teacher to pupil ratio in afternoon session | 1 : 5.0 |
| Ratio includes classes aged 2-3 | No |

| No. of Enrolment (Data as of Sept. 2022) | | | | |
|--|---------|----------|----------|-------|
| | Nursery | Lower KG | Upper KG | Total |
| AM Session | 15 | 0 | 0 | 15 |
| PM Session | 15 | 0 | 0 | 15 |
| WD Session | 0 | 0 | 0 | 0 |

| Annual Fees (2023 / 24 School Year) | | | | |
|---|------------|--------------|--------------|--------------|
| | | Nursery | Lower KG | Upper KG |
| Annual Fees After Deduction of Government Subsidy (No. of Instalment) | AM Session | \$3,100 (10) | \$3,100 (10) | - |
| | PM Session | \$3,100 (10) | - | \$3,100 (10) |
| | WD Session | - | - | - |

Please refer to the Fees Certificate for details of fees information.

| Child Care Services (Data as of Sept. 2022) | | | |
|--|--------------|--|---|
| With child care services for children aged 2-3 | - | With child care services for children aged under 2 | - |
| Fee level (per annum) | (half - day) | No. of enrolment aged 2-3 | 0 |
| | (full - day) | Joining Child Care Centre Subsidy Scheme | - |
| Providing occasional child care services | - | Providing extended hours services | - |

| Curriculum Details | |
|--|--|
| Curriculum type : Local | |
| Curriculum planning | |
| <p>~ Integrated with activities and games, our curriculum is set according to the themes and the needs of children's physical and mental development. ~ Non-Chinese Students learn Chinese through a progressive teaching approach.</p> <p>We will follow the "Kindergarten Education Curriculum Guide" (2017) to plan curriculum. Children of nursery classes will not be asked to write, and there will not be mechanical copying exercises and drills on calculation.</p> | |
| Learning / Teaching approach & activities | |
| <p>~ Children gain knowledge and confidence through active exploration, discussion with buddies and thinking. ~ Outdoor experiential courses to enhance children's observational ability and care for the community. ~ Nature's Classroom provides ample opportunities for children to get in touch with nature. ~ Small group activity teaching, together with picture books, Putonghua, singing, movement and English phonics for teaching, allows children to attain holistic development. ~ We emphasize children's health and physical development. There are daily physical activities, which include running and stretching. ~ Weekly reading program to cultivate children's interest in reading. ~ Home-school interaction and collaboration to help children's learning in different areas. ~ Weekly learning performance rating scale to record children's learning performance in school and for parents to better understand what their children are learning and how they are doing in the week.</p> | |
| Assessment of children's learning experiences | |
| <p>~ On-going assessment and daily observation to record children's progress in learning and physical and mental development. ~ Learning activity record and assessment. ~ Learning assessment for each thematic learning. ~ Half team learning progress report.</p> | |

Monthly salary range of principal & teaching staff
(Data as of Mar. 2023)

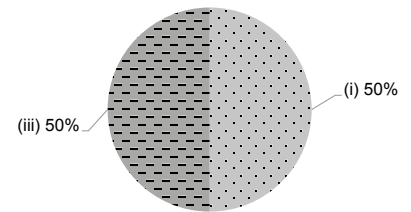
- (i) ≤ \$30,000
- (ii) \$30,001 - \$40,000
- (iii) > \$40,000



| School Characteristics | |
|--|--|
| School vision and mission | |
| We inspire children to enjoy the fun of learning, to cultivate good learning attitude, to play to their potential and the grow healthy. | |
| Support to students | |
| New student adaptation period, primary school adaptation activities, counselling for individual students' physical and mental development, counselling for families, extra-curricular interest activities, Non-Chinese children supporting team | |
| Support to non-Chinese speaking (NCS) students | |
| Received Grant for Support to NCS Students; appoint additional teaching staff / teaching assistants to support NCS students learning Chinese; arrange interpretation / translation services; engage NCS parent volunteers to enhance communication between school and parents; create an enriched language environment for mastery of the Chinese language; create an inclusive learning environment to facilitate students' integration; facilitate professional development for teachers to develop effective strategies to help NCS students learn Chinese. | |
| Support to students with special needs | |
| Joining the On-site Pre-school Rehabilitation Services. Participated in the "On-site Pre-school Rehabilitation Services" organised by Heep Hong Society | |
| Link with parents | |
| Parent-teacher association : No | |
| Other activities / communication with parents | |
| Parent classroom assistants, Festival celebrations, Parent-child sports day, Parent-child tour visits, Parent support services, Parents' gatherings, Parent volunteers, Parents' meetings, Parent-child creative activities, Fathers' Day and Mothers' Day Celebrations. | |

Working experience of principal & teaching staff in pre-primary education
(Data as of Mar. 2023)

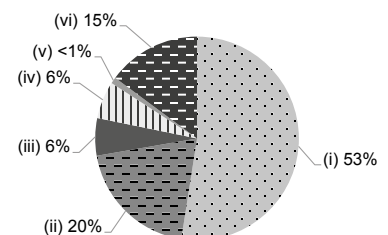
- (i) < 4 years
- (ii) 4 - 7 years
- (iii) > 7 years



2021/22 School Expenditure Information

Expenditure information based on audited account Being Audited

- (i) salary of principal & teaching staff
- (ii) non-teaching staff salary
- (iii) rent, management fees, rates & government rent
- (iv) teaching resources
- (v) staff training & professional development
- (vi) other expenses



| Price of Major School Items (2022 / 23 School Year) | | | |
|---|--------------|---------------------------|--------------|
| Summer uniform | \$270 / set | Winter uniform | \$270 / set |
| School bag | \$140 / each | Tea and snacks | No such item |
| Textbooks | \$760 / year | Exercise books/ workbooks | \$250 / year |
| Stationery | \$180 / year | Bedding items | No such item |