



CHUEN YUEN CHURCH KINDERGARTEN

Tsuen Wan

Address : G/F, 2-4 TAI UK STREET, TSUEN WAN,
NEW TERRITORIES

Tel. : 2492 0010

Fax. : 2406 0122

Joining
2023/24 KG Education Scheme

School No. 152269

Location No. 0001

School Information	
School Category	Non-profit-making
Student Category	Co-educational
Name of School Supervisor	MS CHAN CHUI YIN
Name of School Principal	MS TANG SHIRLEY SHUET YIU
School Founding Year	1964
Total No. of Permitted Accommodation of Classrooms in Use (Data as of Sept. 2022)	224
Number of Registered Classrooms	4
Outdoor Playground	Yes
Indoor Playground	Yes
Music Room	Yes
Other Special Room(s) / Area(s)	Hall, Indoor multi-function room
Total No. of Principal & Teaching Staff (Data as of Sept. 2022) *	8
School Website	http://www.cychurch.edu.hk
Quality Review : Result and Report	Meeting the prescribed standards https://www.edb.gov.hk/attachment/tc/edu-system/preprimary-kindergarten/quality-assurance-frame-work/qr/qr-report/ChuenYuenCh.pdf

No. & Qualification of Principal & Teaching Staff (Data as of Sept. 2022) *	
Academic Qualification	
Degree holders	7
Non-degree holders	1
Professional Qualification	
C(ECE) or above	8
Qualified KG teachers	0
Other teacher trainings	0
Qualified assistant KG teachers	0
Others	0

* Excluding staff serving aged 0-2

Teacher to Pupil Ratio (Data as of Sept. 2022)	
Teacher to pupil ratio in morning session	1 : 8.6
Teacher to pupil ratio in afternoon session	1 : 2.8
Ratio includes classes aged 2-3	No

No. of Enrolment (Data as of Sept. 2022)				
	Nursery	Lower KG	Upper KG	Total
AM Session	26	20	23	69
PM Session	10	9	3	22
WD Session	0	0	0	0

Annual Fees (2023 / 24 School Year)				
		Nursery	Lower KG	Upper KG
Annual Fees After Deduction of Government Subsidy (No. of Instalment)	AM Session	Free	Free	Free
	PM Session	Free	Free	Free
	WD Session	-	-	-

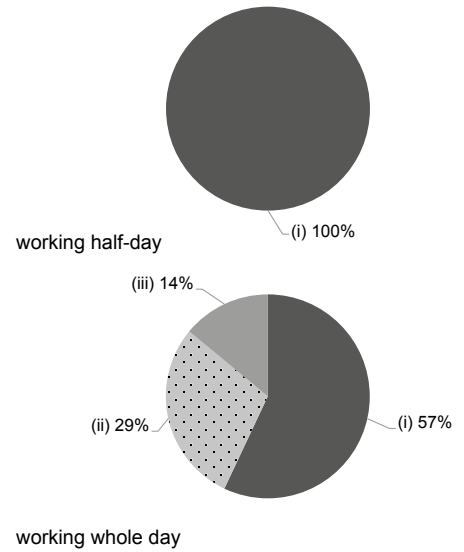
Please refer to the Fees Certificate for details of fees information.

Child Care Services (Data as of Sept. 2022)			
With child care services for children aged 2-3	-	With child care services for children aged under 2	-
Fee level (per annum)	(half - day)	No. of enrolment aged 2-3	0
	(full - day)	Joining Child Care Centre Subsidy Scheme	-
Providing occasional child care services	-	Providing extended hours services	-

Curriculum Details	
Curriculum type : Local	
Curriculum planning	
<p>We arrange school-based inspiring curriculum according to children's developmental needs, abilities and interests. We provide a variety of learning activities with rich contents to stimulate children's learning motivation, enhance children's active exploration and thinking abilities, as well as to help children develop a good learning foundation. We permeate the elements of spiritual education in the curriculum and expects to combine school-based curriculum, learning about life and faith.</p> <p>We will follow the "Kindergarten Education Curriculum Guide" (2017) to plan curriculum. Children of nursery classes will not be asked to write, and there will not be mechanical copying exercises and drills on calculation.</p>	
Learning / Teaching approach & activities	
<p>Our school conducts a great variety of learning approaches through different activities to facilitate children's creativity and develop their core learning experience. In addition, our school also have project approach, various visiting activities, group learning and mixed-age activities for students.</p>	
Assessment of children's learning experiences	
<p>Continuous assessment by observation, recording and evaluation. We provided to children and parents as feedback in "Learning Portfolio". This portfolio will also serve as a reference for teachers to identify the areas for improvement, so as to facilitate learning.</p>	

Monthly salary range of principal & teaching staff
(Data as of Mar. 2023)

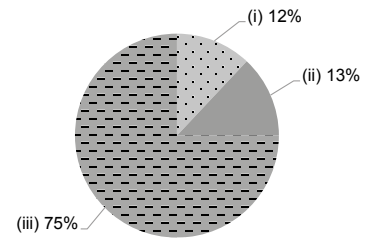
- (i) ≤ \$30,000
- (ii) \$30,001 - \$40,000
- (iii) > \$40,000



School Characteristics	
School vision and mission	
<p>We carry forward the love of Christ and stimulate children's multiple intelligences and promote their mental and physical development. School motto: Train up a child in the way he should go, and when he is old, he will not depart from it. (Proverbs 22:6)</p>	
Support to students	
<p>We provide new students adaption period and P.1 mock school life experience, and make assessment and analysis on the children's development based on continuous observation and reports on their performance, so as to know more about their growth needs and thereby providing assistance or referral as early as possible.</p>	
Support to non-Chinese speaking (NCS) students	
<p>Received Grant for Support to NCS Students; arrange interpretation / translation services; create an enriched language environment for mastery of the Chinese language.</p>	
Support to students with special needs	
<p>Joining the On-site Pre-school Rehabilitation Services.</p>	
Link with parents	
<p>Parent-teacher association : No</p>	
Other activities / communication with parents	
<p>Parent education center, parent group, parents' talks series, parents' day, parent-child activities, open-day, parents volunteers, parents' meetings for new students, P.1 admission parents' meeting, etc.</p>	

Working experience of principal & teaching staff
in pre-primary education
(Data as of Mar. 2023)

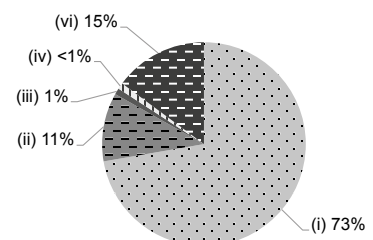
- (i) < 4 years
- (ii) 4 - 7 years
- (iii) > 7 years



2021/22 School Expenditure Information

Expenditure information based on audited account Yes

- (i) salary of principal & teaching staff
- (ii) non-teaching staff salary
- (iii) rent, management fees, rates & government rent
- (iv) teaching resources
- (v) staff training & professional development
- (vi) other expenses



Price of Major School Items (2022 / 23 School Year)			
Summer uniform	\$115-130 / set	Winter uniform	\$135-441 / set
School bag	\$110 / each	Tea and snacks	\$600 / year
Textbooks	\$628-692 / year	Exercise books/ workbooks	\$0 / year
Stationery	\$0 / year	Bedding items	No such item