



SHEUNG SHUI CHURCH KINDERGARTEN

North

Address : 23 JOCKEY CLUB ROAD, SHEUNG SHUI,
NEW TERRITORIES

Tel. : 2672 1848

Fax. : 2670 4259

Joining
2023/24 KG Education Scheme

School No. 150843

Location No. 0001

School Information	
School Category	Non-profit-making
Student Category	Co-educational
Name of School Supervisor	MS CHONG KAM SHEUNG FLORENCE
Name of School Principal	MS CHUNG CHAU WAN
School Founding Year	1956
Total No. of Permitted Accommodation of Classrooms in Use (Data as of Sept. 2022)	342
Number of Registered Classrooms	7
Outdoor Playground	Yes
Indoor Playground	Yes
Music Room	No
Other Special Room(s) / Area(s)	Multipurpose room , Garden , Planting area
Total No. of Principal & Teaching Staff (Data as of Sept. 2022) *	19
School Website	http://www.ssckg.edu.hk
Quality Review : Result and Report	Meeting the prescribed standards https://www.edb.gov.hk/attachment/en/edu-system/preprimary-kindergarten/quality-assurance-frame-work/qr/qr-report/SheungShuiCh.pdf

No. & Qualification of Principal & Teaching Staff (Data as of Sept. 2022) *	
Academic Qualification	
Degree holders	12
Non-degree holders	7
Professional Qualification	
C(ECE) or above	19
Qualified KG teachers	0
Other teacher trainings	0
Qualified assistant KG teachers	0
Others	0

* Excluding staff serving aged 0-2

Teacher to Pupil Ratio (Data as of Sept. 2022)	
Teacher to pupil ratio in morning session	1 : 10.6
Teacher to pupil ratio in afternoon session	1 : 7.3
Ratio includes classes aged 2-3	No

No. of Enrolment (Data as of Sept. 2022)				
	Nursery	Lower KG	Upper KG	Total
AM Session	56	54	62	172
PM Session	38	31	33	102
WD Session	14	11	5	30

Annual Fees (2023 / 24 School Year)				
		Nursery	Lower KG	Upper KG
Annual Fees After Deduction of Government Subsidy (No. of Instalment)	AM Session	Free	Free	Free
	PM Session	Free	Free	Free
	WD Session	\$2,500 (10)	\$2,500 (10)	\$2,500 (10)

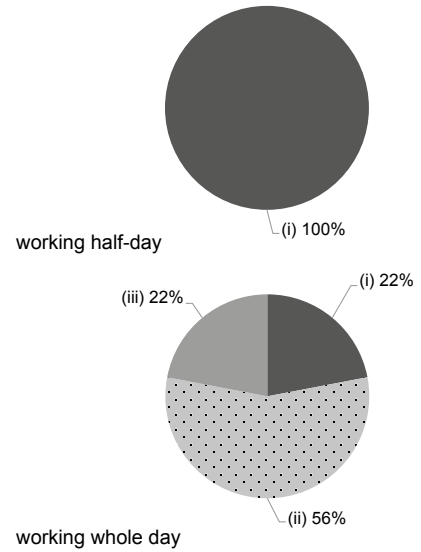
Please refer to the Fees Certificate for details of fees information.

Child Care Services (Data as of Sept. 2022)			
With child care services for children aged 2-3	-	With child care services for children aged under 2	-
Fee level (per annum)	(half - day)	No. of enrolment aged 2-3	0
	(full - day)	Joining Child Care Centre Subsidy Scheme	-
Providing occasional child care services	-	Providing extended hours services	-

Curriculum Details	
Curriculum type : Local	
Curriculum planning	
<p>The child-centred curriculum is designed based on the Guide to Pre-primary Curriculum 2017 as well as our environmental characteristics and school-based resources and corresponds to children's abilities, interests and needs in development. It guides children to build up knowledge through explorations, operation and interactive learning. Topic studies are designed according to social conditions, current news and children's life experiences.</p> <p>We will follow the "Kindergarten Education Curriculum Guide" (2017) to plan curriculum. Children of nursery classes will not be asked to write, and there will not be mechanical copying exercises and drills on calculation.</p>	
Learning / Teaching approach & activities	
Large class teaching; group learning; activity-based approach; group explorations; topic studies; specially designed activities; visits and outdoor learning.	
Assessment of children's learning experiences	
Thematic assessment forms, ongoing assessment forms, children's works, photo records and observation records are used to describe and analyze children's performance in learning and assess their learning outcomes. Children's learning progress is shown in assessments made by teachers and parents as well as children's self-assessments and mutual assessments. Their performance in learning and uniqueness are shown in the profile of learning.	

Monthly salary range of principal & teaching staff (Data as of Mar. 2023)

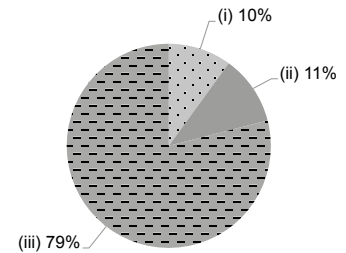
- (i) ≤ \$30,000
- (ii) \$30,001 - \$40,000
- (iii) > \$40,000



School Characteristics	
School vision and mission	
Holistic education is provided based on the beliefs of Jesus Christ to attain balanced development in spiritual, moral, intellectual, physical, communal, and artistic aspects.	
Support to students	
New students adaptation period; organization of relevant activities or courses in cooperation with community organizations and volunteering bodies. Through communication with individual parents, parent-child activities, and meetings and interviews with parents, children's learning efficacy is known. Appropriate adjustments are made to the curriculum and individual counselling scheme is implemented according to children's uniqueness and differences.	
Support to non-Chinese speaking (NCS) students	
Received Grant for Support to NCS Students; appoint additional teaching staff / teaching assistants to support NCS students learning Chinese; create an enriched language environment for mastery of the Chinese language; create an inclusive learning environment to facilitate students' integration; collaborate with non-governmental organisations (NGOs) to create an inclusive learning environment; facilitate professional development for teachers to develop effective strategies to help NCS students learn Chinese.	
Support to students with special needs	
Joining the On-site Pre-school Rehabilitation Services.	
Link with parents	
Parent-teacher association : No	
Other activities / communication with parents	
Parents day, parent-child workshop, parent-child sports day, parent-child day camp, parent-child carnivals, parent-child hiking, parents volunteering teams, parents education courses, kinship paired reading programmes and class observation weeks for parents are organized. Parents volunteering teams are set up for the purpose of helping with school affairs and strengthen home-school tie.	

Working experience of principal & teaching staff in pre-primary education (Data as of Mar. 2023)

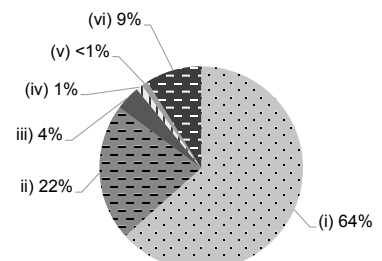
- (i) < 4 years
- (ii) 4 - 7 years
- (iii) > 7 years



2021/22 School Expenditure Information

Expenditure information based on audited account Yes

- (i) salary of principal & teaching staff
- (ii) non-teaching staff salary
- (iii) rent, management fees, rates & government rent
- (iv) teaching resources
- (v) staff training & professional development
- (vi) other expenses



Price of Major School Items (2022 / 23 School Year)			
Summer uniform	\$386 / set	Winter uniform	\$829 / set
School bag	\$72 / each	Tea and snacks	\$600 / year
Textbooks	\$726 / year	Exercise books/workbooks	\$250 / year
Stationery	\$0 / year	Bedding items	No such item